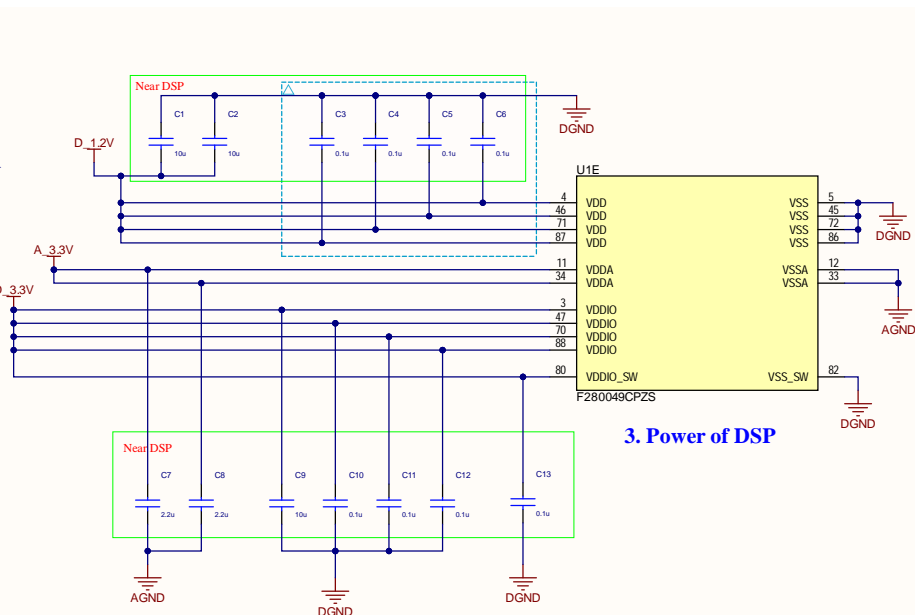
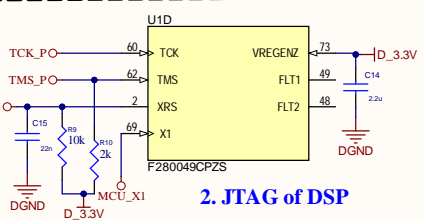
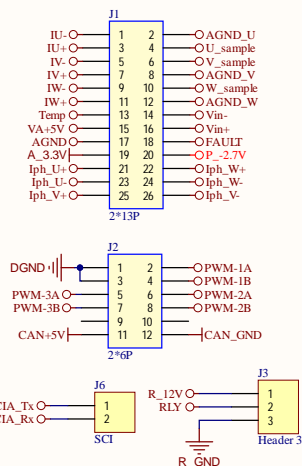


1. GPIO of DSP

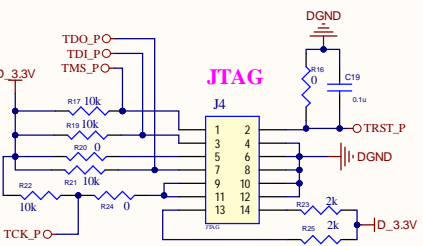


3. Power of DSP

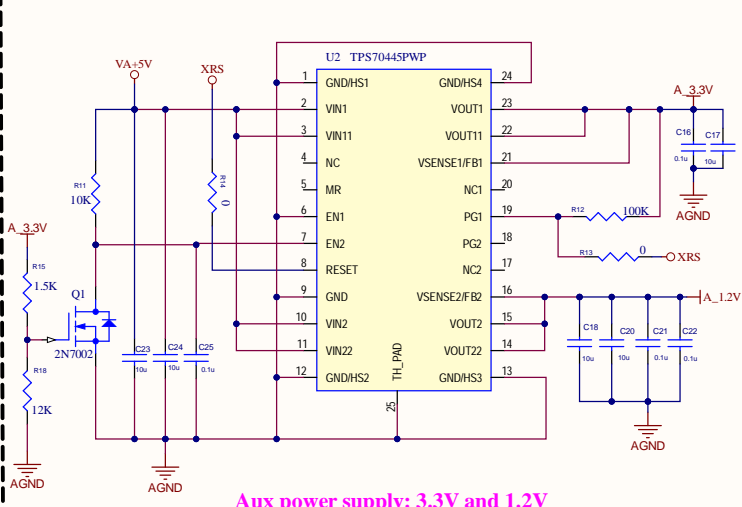
Connectors to Main board



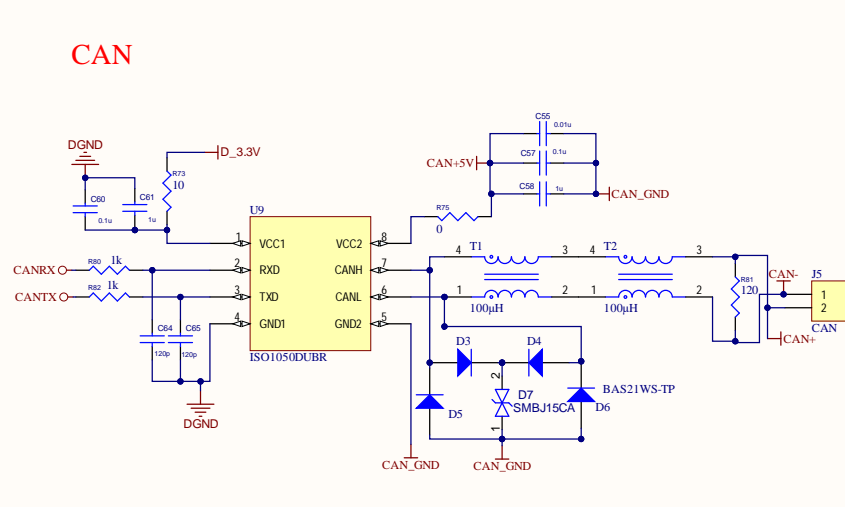
2. JTAG of DSP



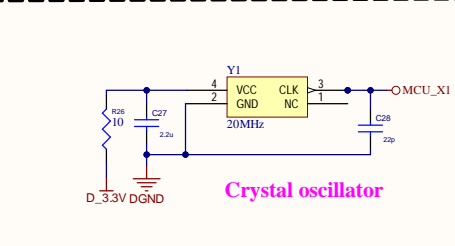
JTAG



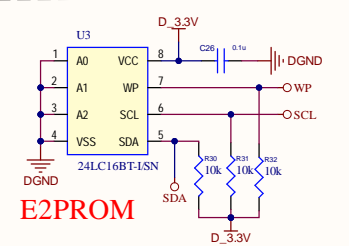
Aux power supply: 3.3V and 1.2V



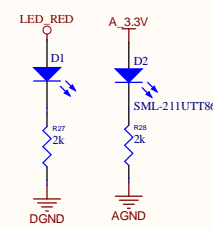
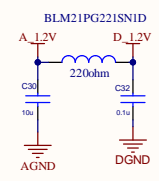
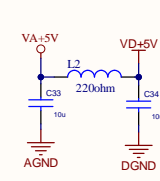
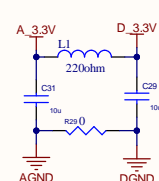
CAN



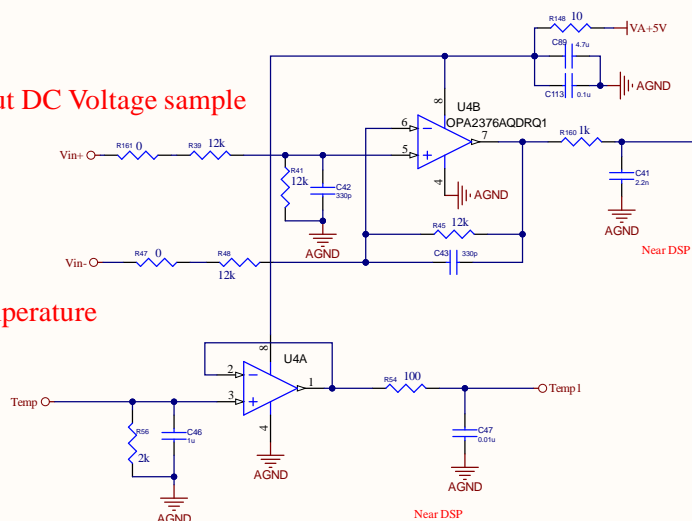
Crystal oscillator



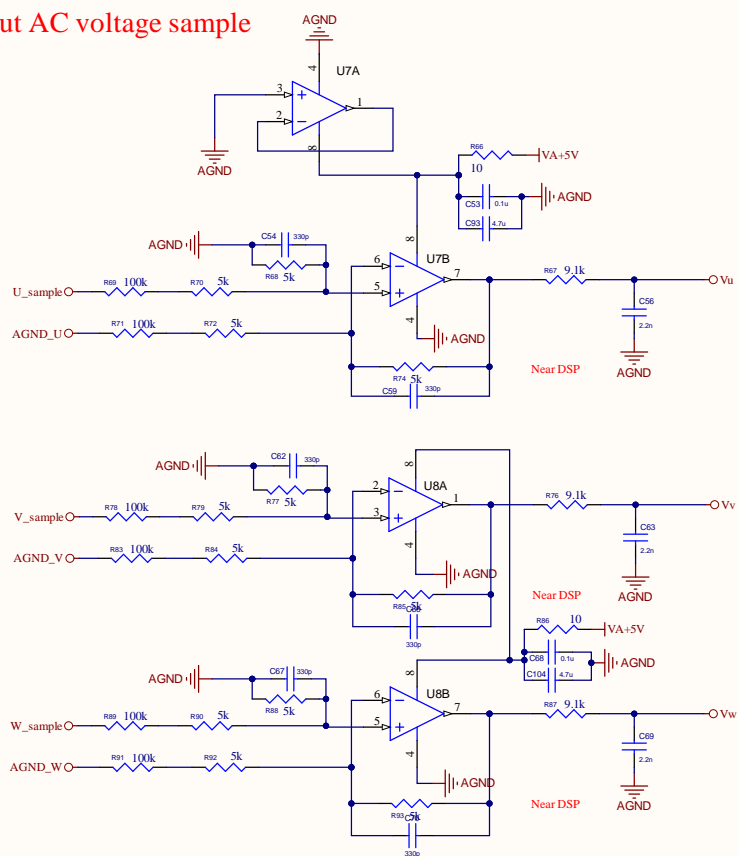
E2PROM



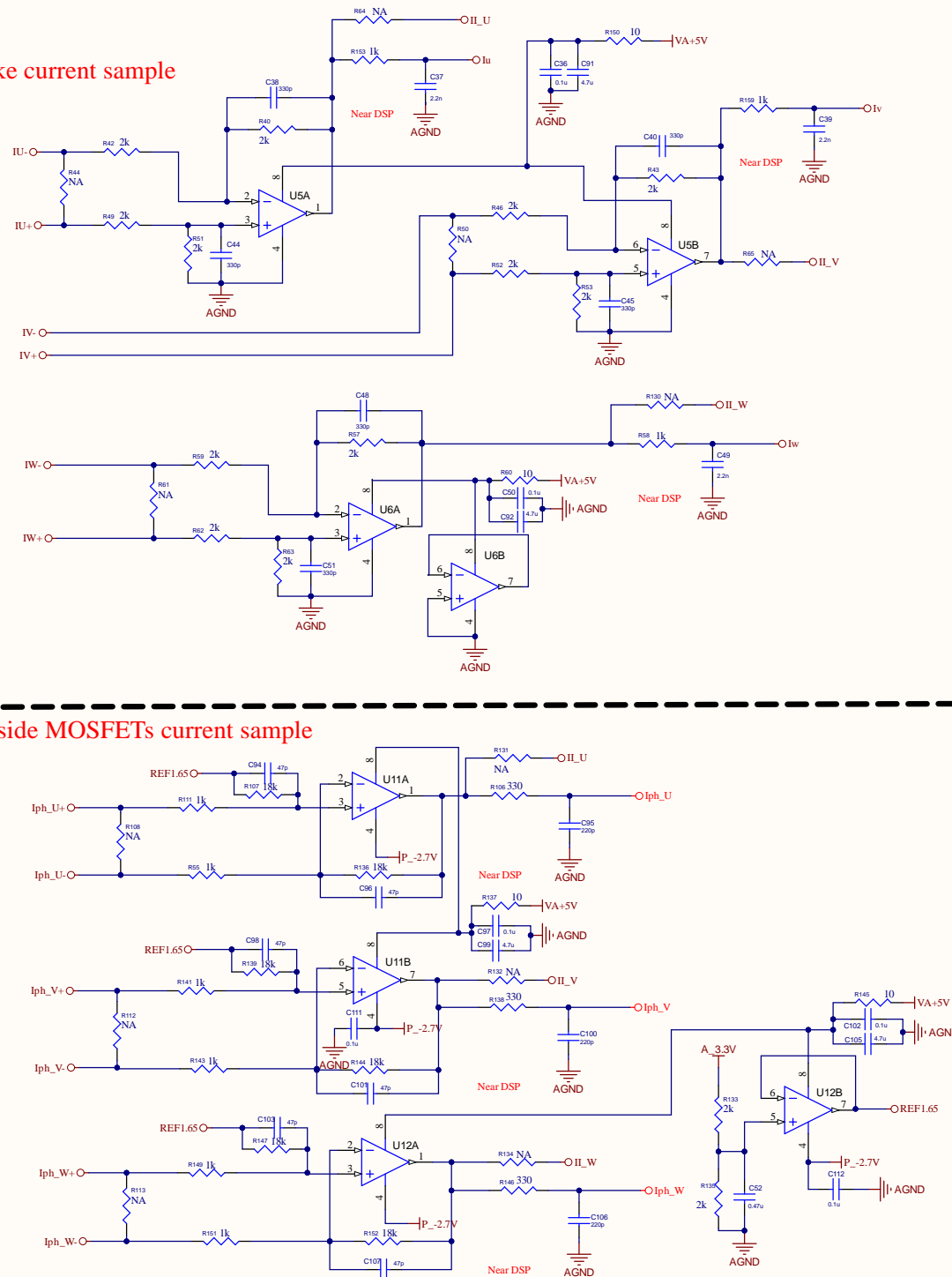
Temperature



Output AC voltage sample



Choke current sample



Comment	Description	Designator	Footprint	Libref	Quantity
10u	CAP CER 100P 10V X5R 0402	C1, C2, C9, C17, C18, C20, C23, C24, C29, C30, C31, C33, C34	CD402	CAP_MP_Dup1	15
81u	CAP CER 0.1UF 25V X7R 0402	C3, C4, C5, C6, C10, C11, C12, C13, C16, C19, C21, C22, C25, C26, C27, C36, C38, C39, C37, C46, C48, C78, C97, C102, C111, C112, C113	CD402	CAP_MP_Dup1	27
2.2u	CAP CER 2.2UF 10V X5R 0402	C7, C8, C14, C27, C32, C33	CD402	CAP_MP_Dup1	4
22n	CAP CER 0.022UF 50V X7R 0402	C19	CD402	CAP_MP_Dup1	1
22p	CAP CER 0.022P 50V C0G/NPO 0402	C28	CD402	CAP_MP_Dup1	1
120p	CAP CER 0.022P 25V C0G/NPO 0402	C25, C44, C45	CD402	CAP_MP_Dup1	3
2.2n	CAP CER 2200PF 50V X7R 0402	C27, C29, C41, C45, C54, C63, C64, C85, C86, C88, C87, C108, C109, C110	CD402	CAP_MP_Dup1	14
130p	CAP CER 130PF 25V X7R 0402, CAP CER 130PF 25V C0G/NPO 0402	C18, C19, C42, C43, C44, C45, C48, C51, C54, C59, C64, C66, C87, C70, C90	CD402	CAP_MP_Dup1	15
1u	CAP CER 1UF 10V X5R 0402	C46, C58, C61, C77	CD402	CAP_MP_Dup1	4
0.01u	CAP CER 0.012UF 16V X7R 0402	C47, C55, C79	CD402	CAP_MP_Dup1	3
0.47u	CAP CER 0.47UF 25V X5R 0402	C52	CD402	CAP_MP_Dup1	1
10A	CAP CER 100PF 25V X7R 0402, CAP CER 2200PF 50V X7R 0402	C71, C72, C73, C74, C75, C76, C81, C85, C200PF 50V X7R 0402	CD402	CAP_MP_Dup1	9
4.7u	CAP CER 4.7UF 10V X5R 0402	C98, C99, C92, C93, C94, C104, C105	CD402	CAP_MP_Dup1	7
47p	CAP CER 47PF 25V X7R 0402	C56, C58, C59, C101, C103, C107	CD402	CAP_MP_Dup1	6
220p	CAP CER 0.022P 25V X7R 0402	C95, C100, C106	CD402	CAP_MP_Dup1	3
DA1, 211UTTB6	LED BLUE C3246 0805 0402	C1, D2	LED0805	LED0	2
BAC21W5-TP	DIODE GEN PURP 20W 200MA SOD323	C3, D4, D5, D6	DIOD_SOD323-2-A_V	CMP-004-00002-1	4
34M15CA	TVS DIODE 15V 24.4W SOD146	C7	DIOT14AA	CMP-004-00030-2	1
BAV99-7-F	DIODE ARRBY GP TH 300MA SOT23-3	C8, D9, D10, D11, D12, D13, D14, D15, D16, D17, D18	SOT-23.3	CMP-004-00011-1	11
Test point	Test point	DACA, DACB, bu, N, tw	TEST_270X100_SMT	Test	5
IC11003	OPTOISOLATE 5KV TRANSISTOR 4-52P	C1	801003	IC-PC317	1
2*13P	CONN HEADER R/A 2POS 2.54MM	C1	HDR2X13H-254MM- 90LP	2*13P	15
2*4P	CONN HEADER R/A 2POS 2.54MM	C2	HDR2X4H-254MM-90- LP	2*4P	1
Header 3	CONN HEADER R/A 3POS 2.54MM	C3	HDR1X3-254MM	Header 3	1
IFAC	CONN HEADER R/A 4POS 2.54MM	C4	HDR2X1H-254MM-90	2*1P	1
CAN	CONN HEADER R/A 2POS 2.54MM	C5	HDR1X2H-254MM	Header 2H	1
IC1	CONN HEADER R/A 2POS 2.54MM	C6	HDR1X2H-254MM	Header 2H	1
BLM21PQ2213M1D	INDUCT BEAD 22H OHM 0805, 1/8W	L1, L2, L3	6-0805_1	Inductor	3
2N7002	MOSFET N CH 40V 170MA SOT-23	C21	SOT-23.3	2N7002/SOT	1
RAM41619TA	TRANS NPN 60V 0.6A SOT23-3	C22	SOT-23.3	2N3904	1
2k	RC0402 100 200 1% E77 E3	R1, R2, R3, R4, R5, R6, R7, R8, R10, R20, R25, R27, R28, R36, R37, R40, R42, R43, R46, R49, R51, R52, R53, R54, R57, R59, R62, R63, R710, R733, R735	D402	RESISTOR_Dup1	31
10k	RC0402 100 10K 1% E77 E3	R9, R11, R17, R19, R21, R22, R29, R31, R32	D402	RESISTOR_Dup1	9
10K	RC0402 100 10K 1% E77 E3	R12	D402	RESISTOR_Dup1	1
8	RC0402 080 E77 E3 RES 8 OHM 0.8W 1% 170MA 0402	R13, R14, R16, R20, R24, R29, R35, R115, R121, R126	D402	RESISTOR_Dup1	10
1.5k	RC0402 100 1K 1% E77 E3	R45	D402	RESISTOR_Dup1	1
12k	RES SMD 12K OHM 1% 1/16W 0402	R18, R41, R45	D402	RESISTOR_Dup1	3
10	RC0402 100 10K 1% E77 E3	R26, R60, R66, R73, R88, R109, R137, R145, R148, R150	D402	RESISTOR_Dup1	10
10	RES 510 OHM 1% 1/16W 0402	R33	D402	RESISTOR_Dup1	1
1k	RC0402 100 1K 1% E77 E3	R34, R55, R58, R80, R82, R96, R99, R99, R101, R103, R105, R111, R119, R123, R125, R130, R141, R143, R149, R151, R153, R154, R156, R157, R159, R160	D402	RESISTOR_Dup1	26
20k	RC0402 100 20K 1% E77 E3	R35	D402	RESISTOR_Dup1	1
100	RC0402 100 100K 1% E77 E3	R38, R54, R714, R716, R717, R718, R720, R722, R734, R721, R729, R740, R742, R755, R758	D402	RESISTOR_Dup1	15
12k	RES SMD 12K OHM 1% 1/4W 1206	R39, R48	R1206	RESISTOR_Dup1	2
NA	NA, RC0402 100 1K0 1% E77 E3	R44, R50, R61, R64, R65, R108, R112, R113, R130, R131, R132, R134	D402	RESISTOR_Dup1	12
0	RES SMD 0 OHM JANESSE 1.048 1206	R47, R161	R1206	RESISTOR_Dup1	2
0.1k	RES 9.1K OHM 5% 1/20W 0402	R67, R76, R87	D402	RESISTOR_Dup1	3
0k	RC04020R-0704L	R68, R74, R77, R85, R85, R85	D402	RESISTOR_Dup1	4
100k	RES 100K OHM 5% 1/4W 1206	R69, R71, R78, R83, R89, R91	R1206	RESISTOR_Dup1	6
0k	RES 0K OHM 5% 1/4W 1206	R70, R72, R79, R84, R90, R92	R1206	RESISTOR_Dup1	6
120	RES SMD 120 OHM 1% 1/16W 0402	R81	R0403	RESISTOR_Dup1	1
68	RES 68 OHM 1% 1/16W 0402	R94, R95, R97, R100, R101, R104	D402	RESISTOR_Dup1	4
120	RC0402 100 120K 1% E77 E3	R106, R138, R146	D402	RESISTOR_Dup1	3
10k	RES SMD 10K OHM 1% 1/16W 0402	R107, R136, R139, R144, R147, R152	D402	RESISTOR_Dup1	6
0.04733H101M02L	CAP 1000PF 100V 500MA 2LN SMD	T1, T2	T1-1812	CMP-009-00021-2	2
7805040025	IC:REG 5V 3.3V/1.2V 240TSSOP	U1	P0100A_N	CMP-0078352-1	1
TP57045PWP	IC:REG 1.8V 3.3V/1.2V 240TSSOP	U2	TP57045PWP	TP57045PWP_TSSOP	1
24LC16BT-1/5N	IC:EEPROM 16K G2 16M2 BSCIC	U3	BSCIC	24C16BT-1/5N	1
OPA237A02DR01	IC:OPAMP GP 2 SINGLE BSCIC	U4, U5, U6, U7, U8	BSCIC	OPA237A02G4	5
DS1050DUBB	DS1050 ISOLATED 5- V CLAMP TRANSCEIVER	U9	B-5CP	DS90	1
MC74VHC15ADR02	IC:INP NON INVERT 5.5V 14PDSIC	U10	VSIC	MC74VHC15A_SIC	1
OPA263MDR	IC:OPAMP 2 CIRC BSCIC	U11, U12	BSCIC	OPA237A02G4	2
20MHz	CRYSTAL 20.0000MHz 19PF SMD	F1	TBD Footprint:1	CMP-003-00030-2	1